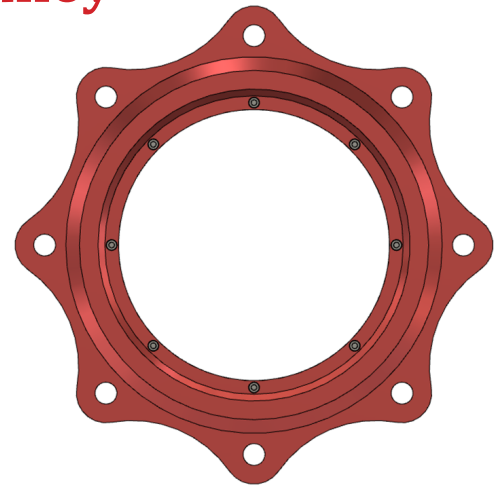
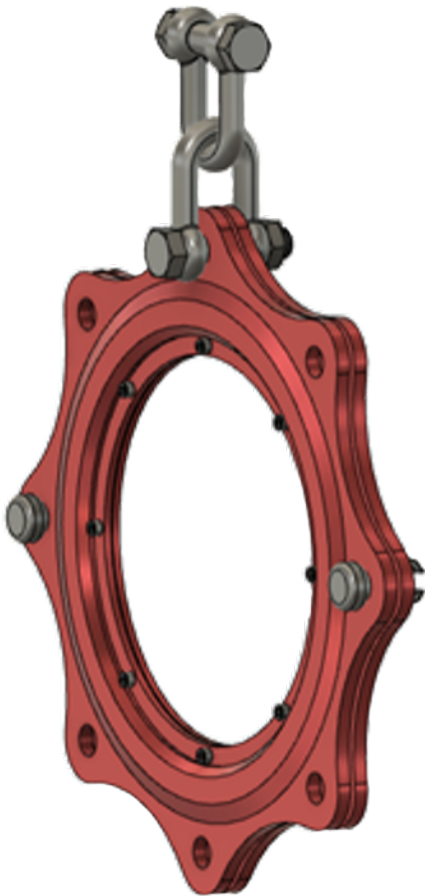


ORB Sheave/Hay Pulley®



The ORB Sheave/Hay Pulley is like no other pulley. The benefits and features provided by the all new design is unmatched by anything available on the market today.

The new visually radical design incorporates innovative improvements never seen before in a pulley. The state-of-the-art design provides unrivalled safety, increases working limits, and reduces risks and hazards when working. Redress times are remarkable as it can be fully redressed in the field with only an Allen Key in just minutes.

Specifications (16" Sheave):

- Safe Working Load = 10,000lbs
- Proof Load = 20,000lbs
- Tested Weight = 40,000lbs
- Weight = 19lbs (9.4kgs)
- Width = 1-5/8" (41mm)
- Diameter = 22-1/4" (565mm)
- 8 External Mounting Points
- Used with 6.5T Shackle
- Materials – Aluminium, Stainless Steel, Steel.

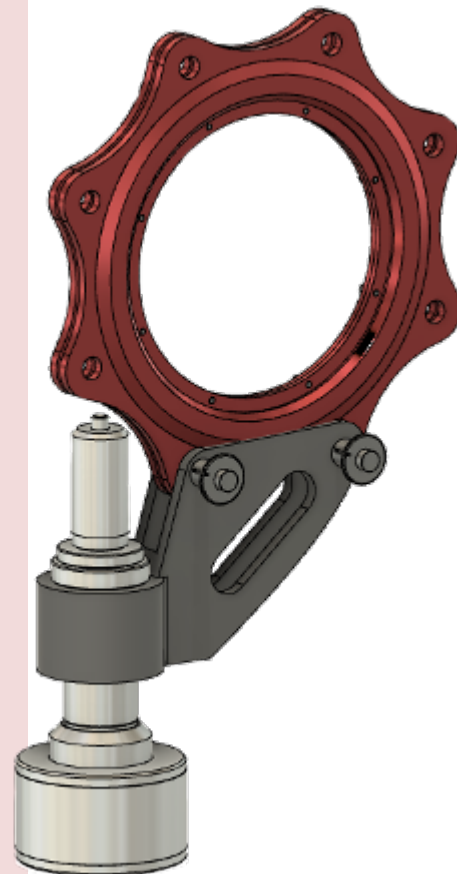
Applications:

- For use with - Slickline, Braided-line, Electric-line, Coated Lines
- For any size and type of wire.
- The ORB Sheave/Hay Pulley can be soft mounted using slings, or hard mounted with a fixed bracket utilising one or more of the eight external mounting points.
- Mounting of the ORB Sheave/Hay Pulley can be externally or internally.
- Enclosed design for use in high debris conditions such as snow or sandy climates.
- Designed to be used as the lower Load Cell (Weight Indicator) Pulley, Top Block Pulley, or the Stuffing Box Pulley.
- Designed to all applicable Industry Standards, Codes and Certification.

ORB Sheave/Hay Pulley®

Features and Benefits:

- Wire cannot jump out or exit the pulley during vigorous operation such as Jarring.
- Totally enclosed Groove Wheel protects it from damage or distortion.
- 360degree wire stability and guidance into the Grooved Wheel.
- 360degree wire guard around the full circumference of the Groove Wheel
- Fully encapsulated wire within the Grooved Wheel.
- Minimized force flow path through assembly reducing any deflections or distortions.
- Increased load and mounting point options, both internal and external.
- Non-contactable moving parts eliminates finger nips or clothing grab. Increased workforce safety.
- Ultra-safe and ergonomic Manual Handling.
- Reduced inventory of assembly items allows for a reduce stock of stored replacement parts.
- Increased bearing size to stabilize the Groove Wheel during operation and for longer service



Options:

- Can be used in conjunction with any manufacturer's Lubricator Mounting Bracket.
- Can be used as a Stuffing Box Sheave with any manufacturer's Stuffing Box
- Pulley can be configured to be used as a single fall or unlimited multiple falls.
- Additional Wire Wiper, Floor Stand, and/or Line Guides can be fitted.